



CITY OF BATON ROUGE | PARISH OF EAST BATON ROUGE DEPARTMENT OF DEVELOPMENT | FLOODPLAIN MANAGEMENT FLOOD HAZARD AREAS

In addition to the FEMA Special Flood Hazard Areas, the Parish utilized the 2D hydrologic model, developed under the *EBR Stormwater Master Plan* initiative, to create parish-wide *Community Defined Special Flood Hazard Areas* (CD SFHA), including the establishment of *Community Defined Flood Elevations* (CD FEs).

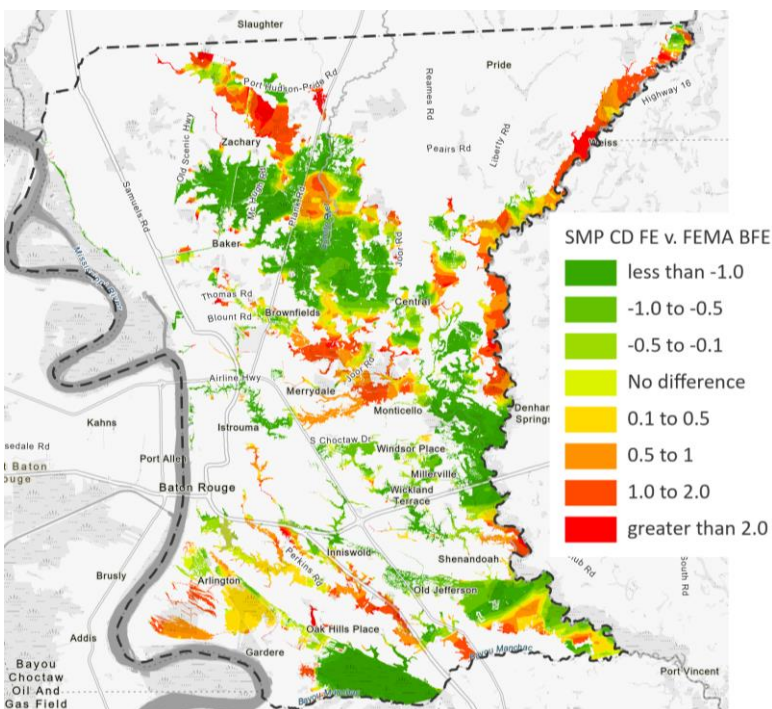
The CD SFHAs and CD FEs were created utilizing the most up-to-date data available, in order to establish more accurate estimations of current and future flood risk in the Parish, and encourage more resilient and responsible development. FEMA SFHAs and BFEs utilize data that is out-of-date, and much less accurate than currently available, which can result in some developments to experience, and increase, current and future flood risk. For detailed methodology on the development of the CD SFHAs and CD FE, see: www.brla.gov/DocumentCenter/View/16880/

The CD Fes are enforced similarly to, and in conjunction with, FEMA BFEs. For mitigation and minimum floor elevation, CD FE is an additional design factor to consider, with the higher elevation controlling. Developments with proposed fill are required to demonstrate that there will be no decrease in the existing flood volume storage capacity below the FEMA BFE and/or the CD FE, whichever is higher. For specific requirements, refer to Section 15.21 of the UDC Chapter 15.

Infill type development situations, that may adversely affect adjoining or adjacent lots, can request a variance of CD FE to be considered by the Floodplain Administrator.

When new CD SFHA maps with new CD FEs are proposed to be adopted, a viewing and/or buy-in period will exist, prior to implementation. New maps/elevations will be adopted by EBR Metro-Council.

CD SFHAs and CD FEs are publically available on the [Drainage and Flood Zone Map](#) on the the EBRGIS website. To see the approximate CD FE for a specific location or address, simply click on the map inside of the CD SFHA and a pop-up will indicate the estimated CD FE for that location or address. To obtain an official CD FE, apply for a Flood Zone Determination (FZD) from the Department. For instructions on how to obtain a FZD, see: www.brla.gov/DocumentCenter/View/7430/.



All new development, as well as substantial improvements, shall have the lowest floor located at least one foot above the highest of the following:

- FEMA Base Flood Elevation
- Community Defined Flood Elevation
- Record Inundation
- The highest cross-sectional point at the lowest street cross-section along the frontage of the property
- The top of the lowest first upstream or down-stream sanitary sewer manhole